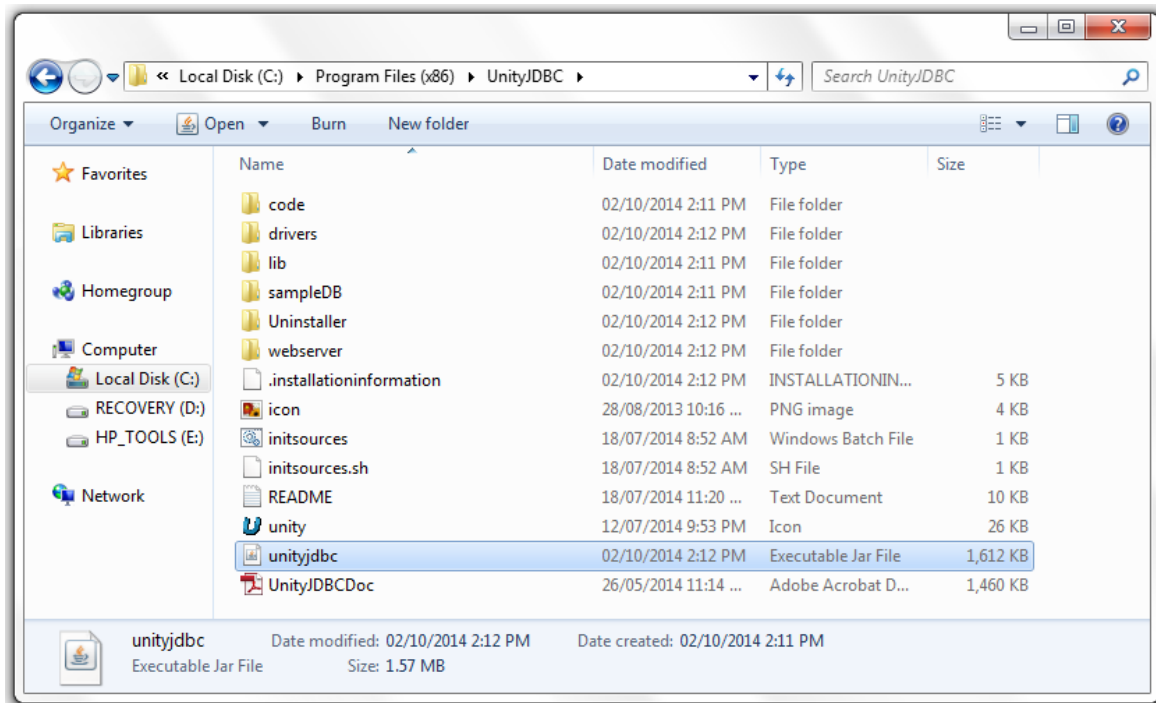


# Mongo JDBC and UnityJDBC Driver Setup for SQL Explorer in Eclipse

---

1. Download and install UnityJDBC at <http://www.unityjdbc.com/download.php>.
2. After installation, there is a **unityjdbc.jar** file in the installation directory. On Windows, the default install path is: **C:\Program Files (x86)\UnityJDBC (32-bit Java)** or **C:\Program Files\UnityJDBC (64-bit Java)**. We will use this jar in later steps.

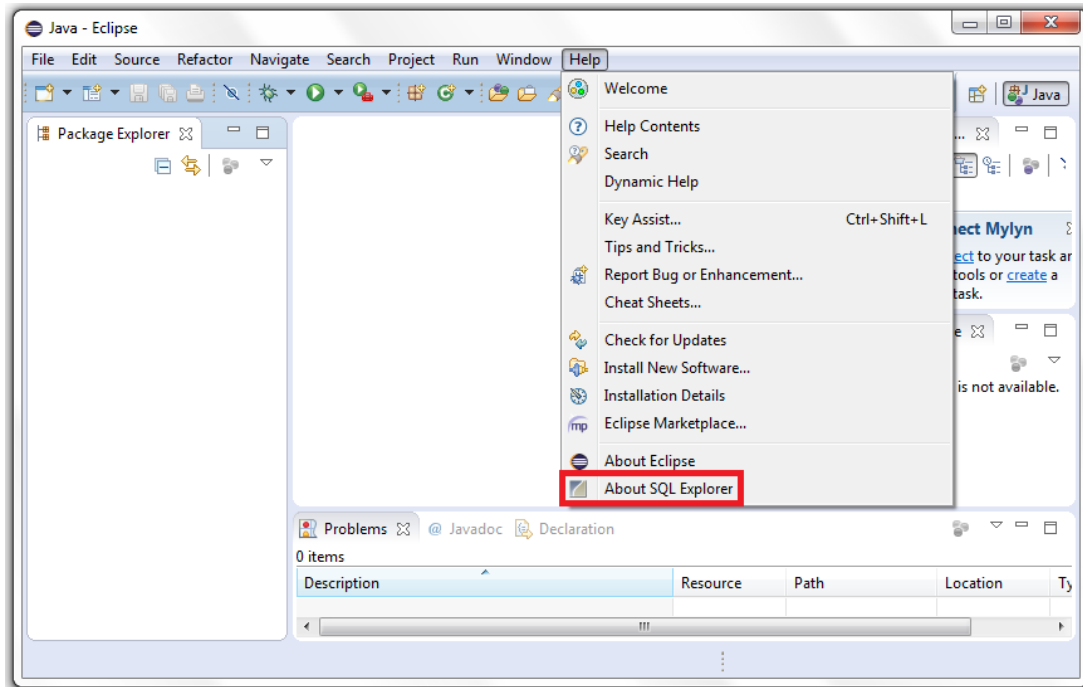


3. We will also be using a Mongo driver. This can be found in the installation directory at **drivers/Mongo/mongo-java-driver-2.12.2.jar**.

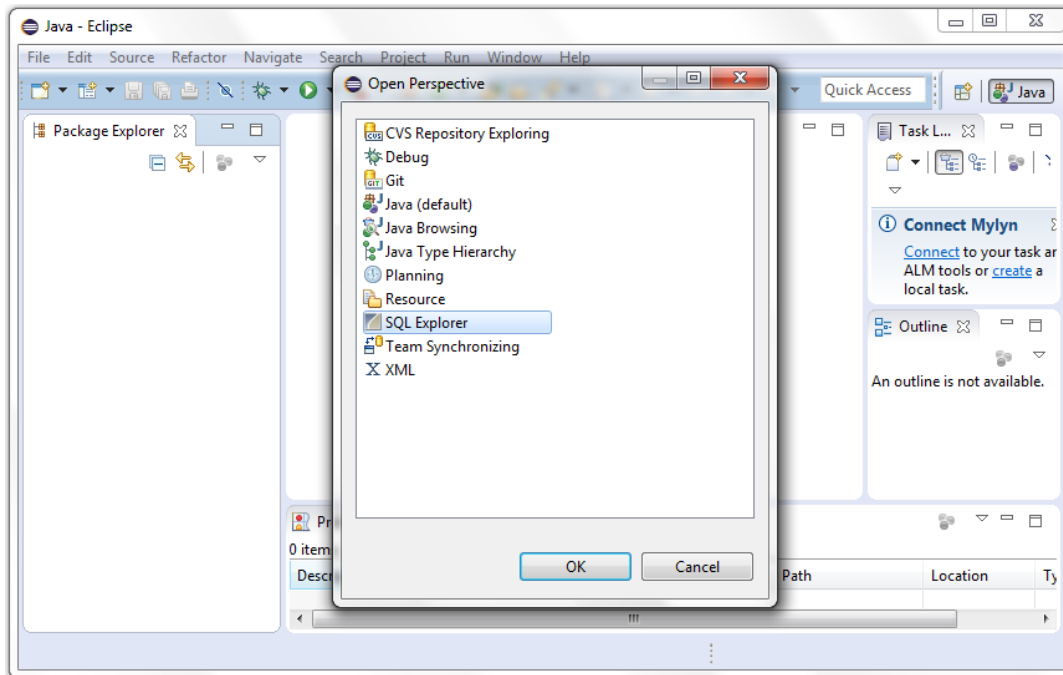
**If you have SQL Explorer installed already, skip to step 6.**


4. Download the SQL Explorer plugin for Eclipse at <http://eclipseql.sourceforge.net/>.
5. After downloading is complete, extract the contents into your Eclipse directory.

6. Start Eclipse. First, to tell if SQL Explorer was added successfully, check the **Help** menu. You should see **About SQL Explorer** listed. You may click this to check the current version of the plugin as well as other information.



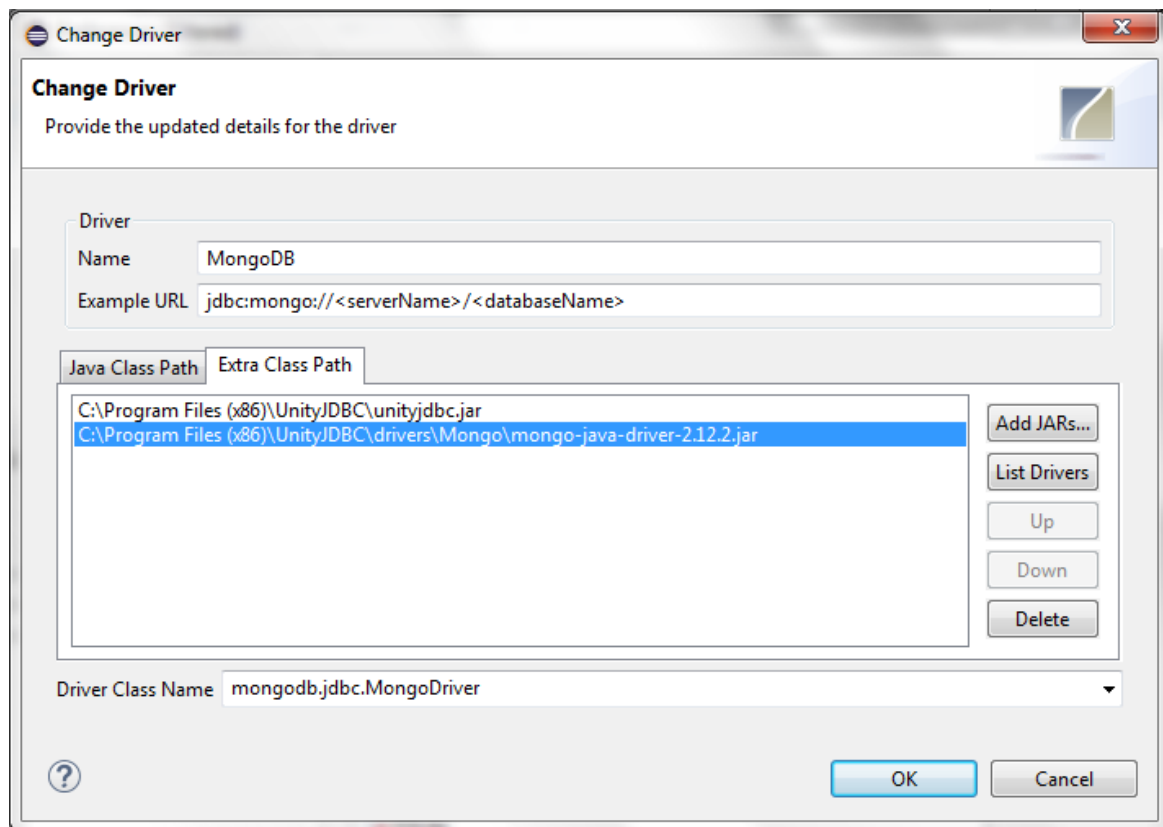
7. Now open SQL Explorer's perspective by selecting the menu item **Window > Open Perspective > Other**. Select **SQL Explorer** in the menu that pops up and hit **OK**.



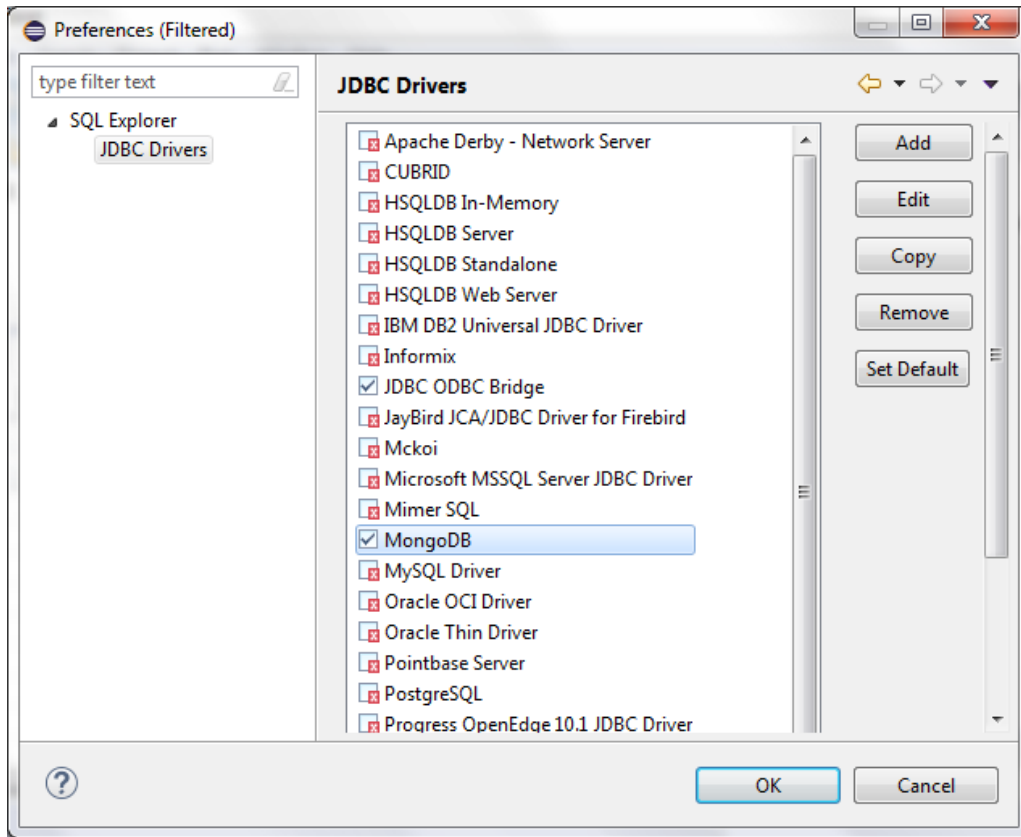
8. Now that we are in the correct perspective, click the  button to create a new connection profile. We first need to add the correct driver. Click **Add/Edit Drivers**.

9. Under **SQL Explorer**, click **JDBC Drivers** and then click **Add**. Fill in the appropriate information. To add the unityjdbc.jar, go under **Extra Class Path** and add the jars from **step 2** and **step 3**. Press **OK**. Here is sample MongoDB driver information:

Name	MongoDB
Example URL	jdbc:mongo://<serverName>/<databaseName>
Driver Class Name	mongodb.jdbc.MongoDriver

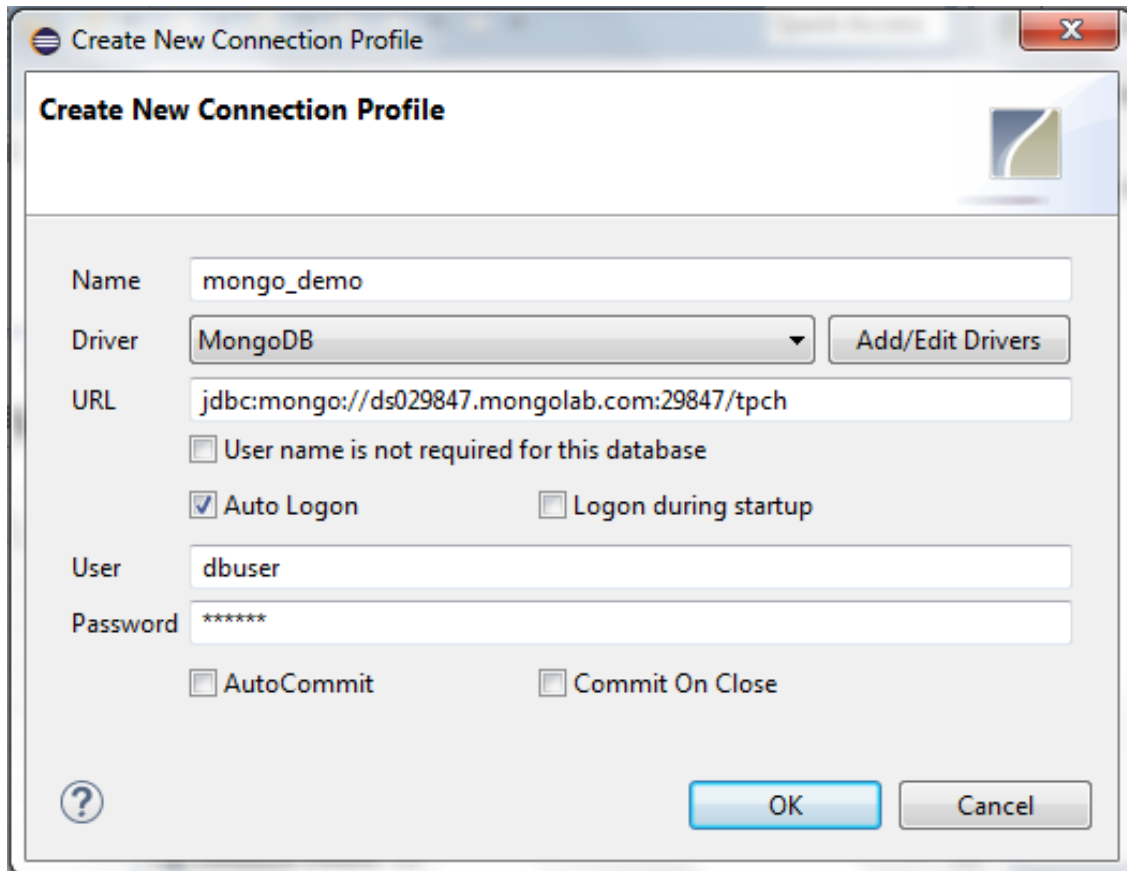



10. You should now see the MongoDB driver listed and checked under **JDBC Drivers**. Click **OK**.

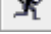


11. Now we can fill in the connection profile with the needed information. Remember to select the driver you just added. Here is a sample connection profile:

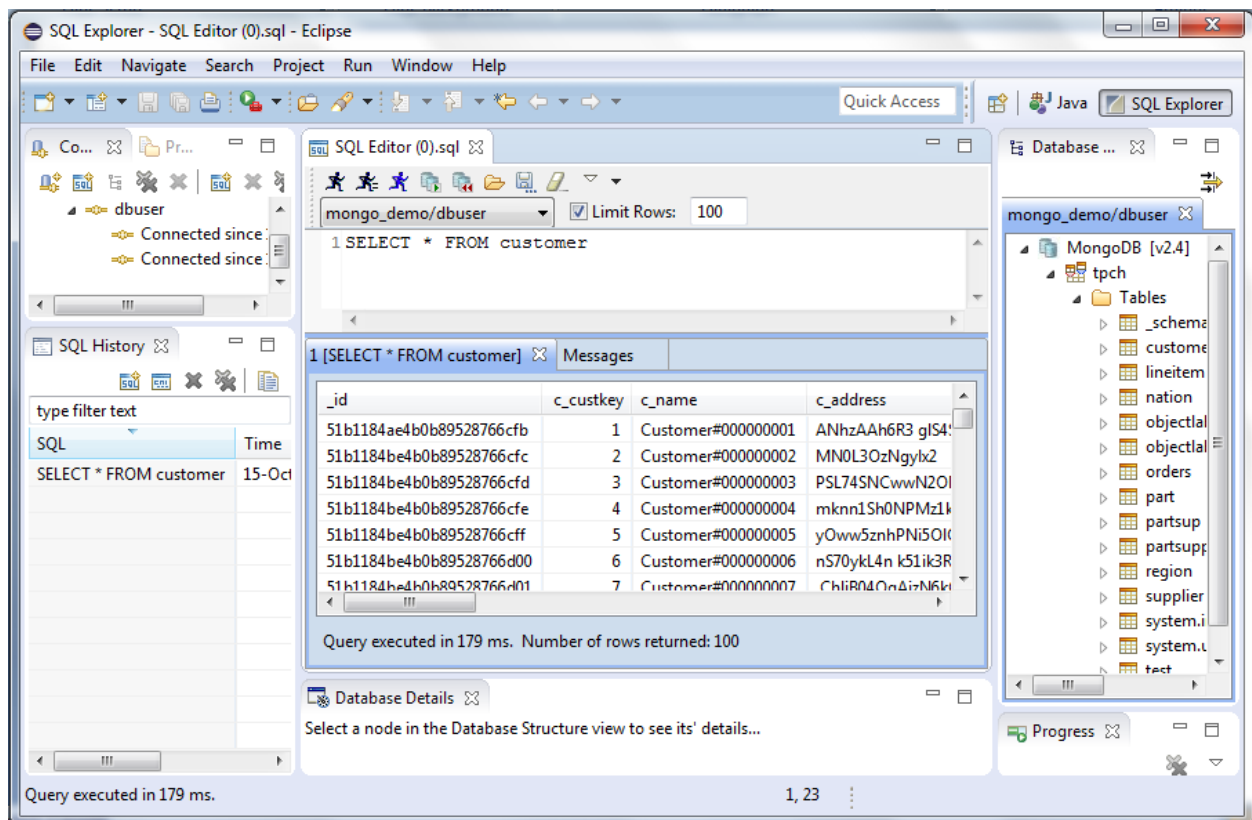
Name	mongo_demo
User Name	dbuser
Password	dbuser
JDBC URL	jdbc:mongo://ds029847.mongolab.com:29847/tpch



12. You can now right click your new connection profile and click the  button to connect. After connection, you can browse the schema by clicking the **MongoDB** tab on the right.

13. Right click on the **dbuser** tab and select **New SQL Editor** to enter SQL queries. Click  to run the query. Here are two example queries. The first query queries a single table and runs completely on MongoDB. The second query uses a join that requires UnityJDBC. The 30-day trial version will return an unlimited number of rows (then only 100 rows after the trial is over). Upgrade to the full version at <http://www.unityjdbc.com/purchase.php>. More details on querying is at <http://www.unityjdbc.com/mongojdbc/mongosqltranslate.php>.

Query #1	<b>SELECT *</b> <b>FROM customer</b>
Query #2	<b>SELECT *</b> <b>FROM customer INNER JOIN orders</b> <b>ON c_custkey = o_custkey</b>



SQL Explorer - SQL Editor (0).sql - Eclipse

File Edit Navigate Search Project Run Window Help

Quick Access

Co... Pr... mongo\_demo/dbuser

Connected since  
Connected since

SQL History

type filter text

SQL Time

SELECT \* FROM custom... 15-Oct

SELECT \* FROM customer 15-Oct

SQL Editor (0).sql

mongo\_demo/dbuser Limit Rows: 100

```
1 SELECT *
2 FROM customer INNER JOIN orders
3 ON c_custkey = o_custkey
```

1 [SELECT \* FROM customer...] Messages

_id	o_orderkey	o_custkey	o_orderstatus
51b118c2e4b0b895287672ea	68	34	O
51b118c3e4b0b895287672f1	99	8	F
51b118c3e4b0b895287672f7	129	62	F
51b118c3e4b0b895287672fc	134	8	F
51b118c4e4b0b89528767306	192	25	O
51b118c5e4b0b8952876730e	224	71	F
51b118c5e4b0b89528767314	220	4	F

Query executed in 193 ms. Number of rows returned: 8

Database Details

Select a node in the Database Structure view to see its' details...

Database Structure

mongo\_demo/dbuser

MongoDB [v2.4]

- tpch
  - Tables
    - \_schema
    - customer
    - lineitem
    - nation
    - objectl
    - objectl
    - orders
    - part
    - partsup
    - partsupp
    - region
    - supplier
    - system.i
    - system.u
    - test

Progress

Query executed in 193 ms. 4, 1