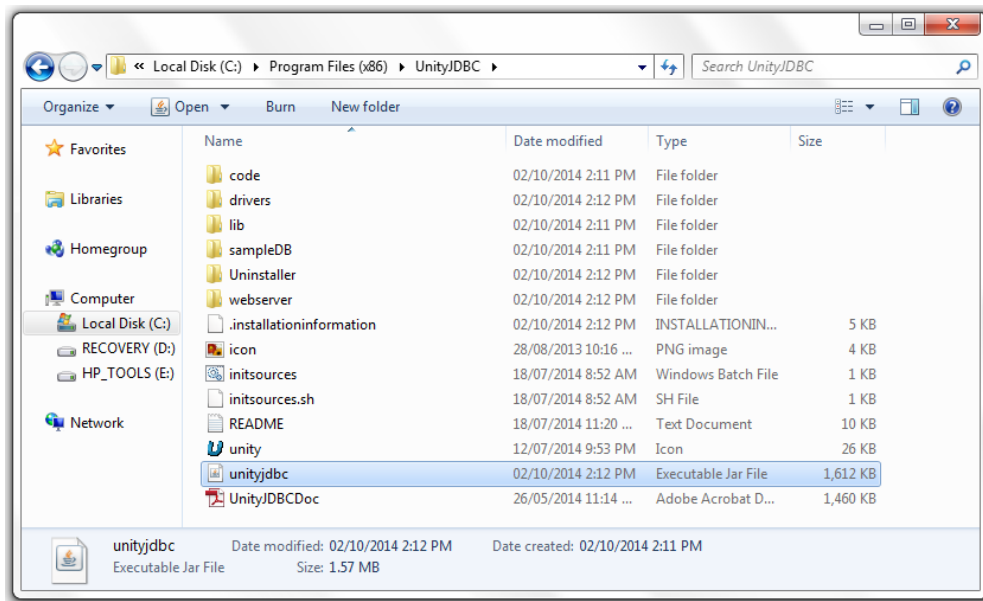
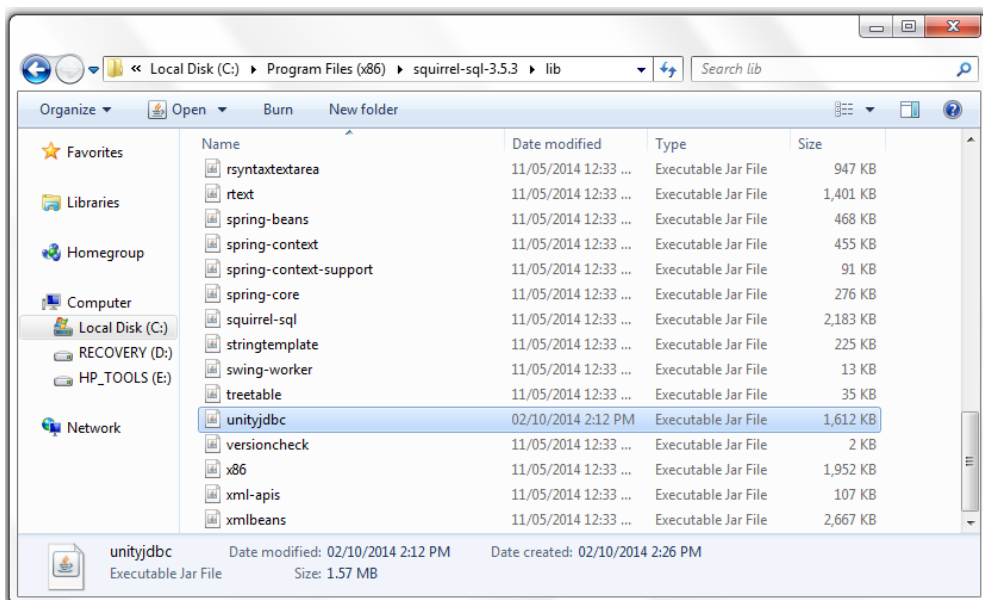



Quandl JDBC and UnityJDBC Driver Setup for SQuirreL SQL

1. Download and install UnityJDBC at <http://www.unityjdbc.com/download.php>.
2. After installation, there is a **unityjdbc.jar** file in the installation directory. On Windows, the default install path is: **C:\Program Files (x86)\UnityJDBC**

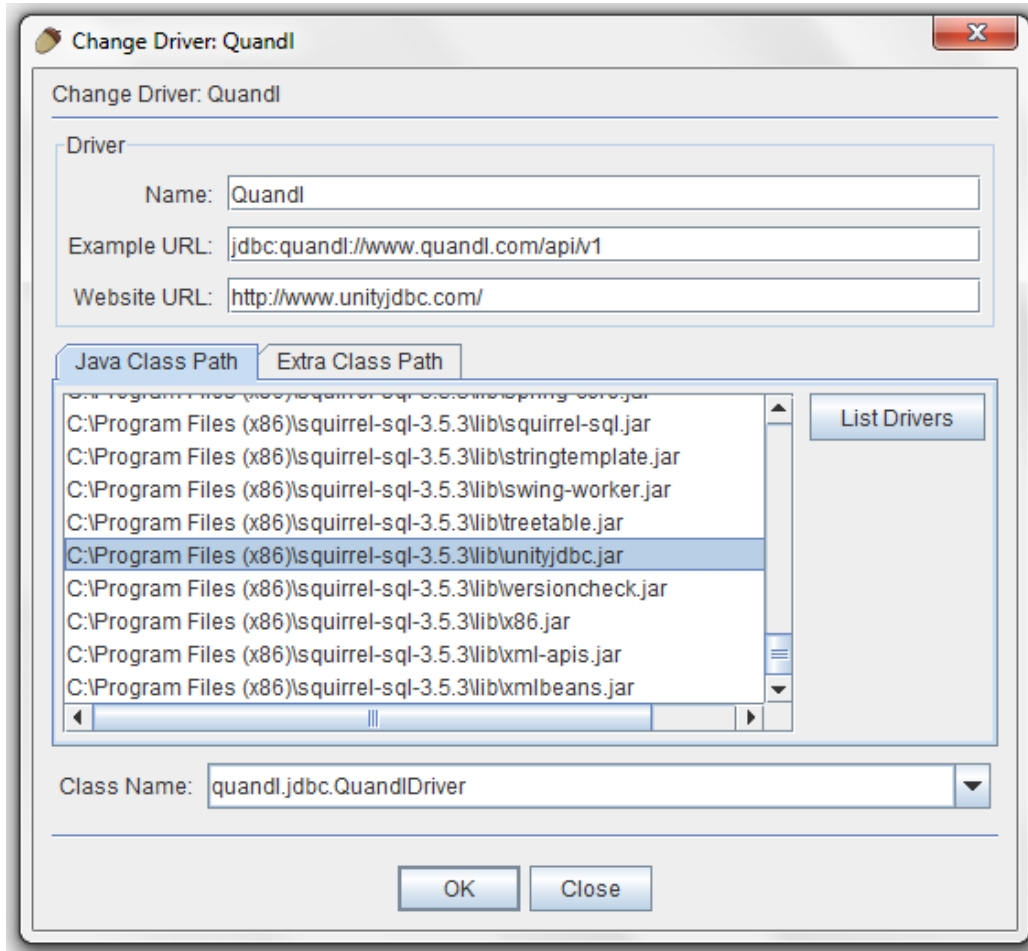


3. Copy the **unityjdbc.jar** file into the **lib** folder for your SQuirreL SQL installation. For example: **C:\Program Files (x86)\squirrel-sql-3.5.3\lib**

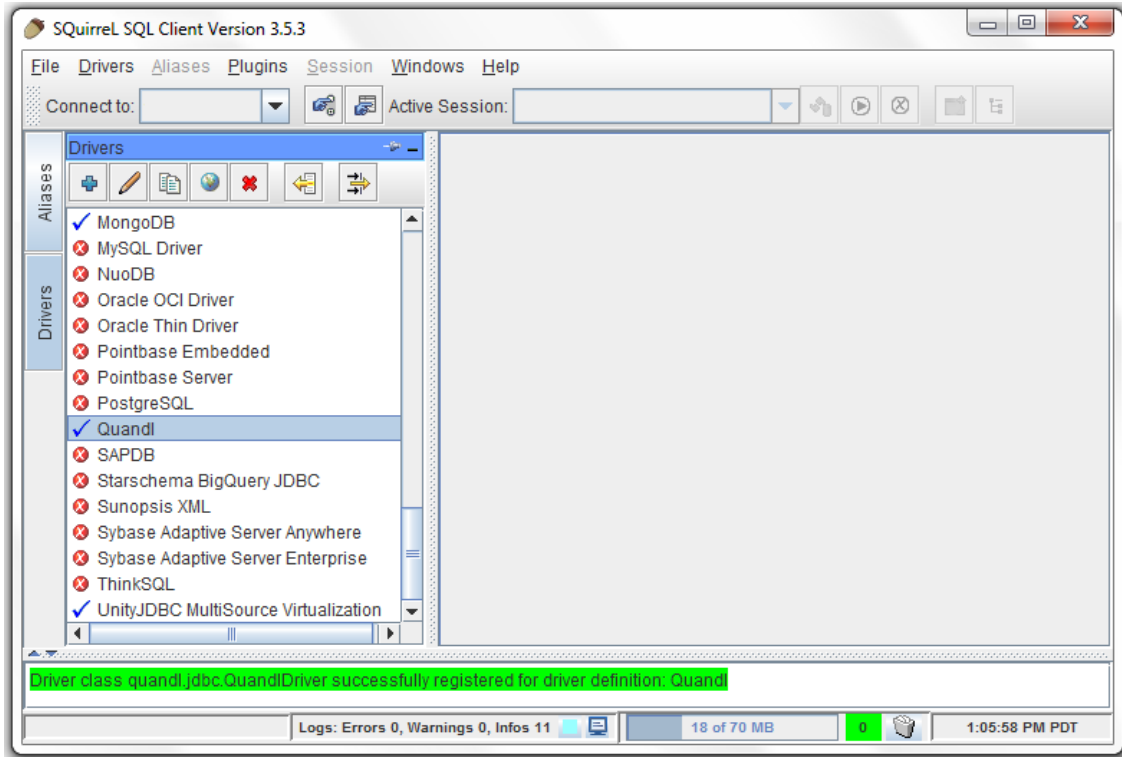



4. Start SQuireL SQL. Under the **Drivers** tab, click the  to add a new driver. After entering the appropriate settings, click **OK**. Settings:

Name	Quandl
Example URL	jdbc:quandl://www.quandl.com/api/v1
Website (Optional)	http://www.unityjdbc.com/
Class Name	quandl.jdbc.QuandlDriver

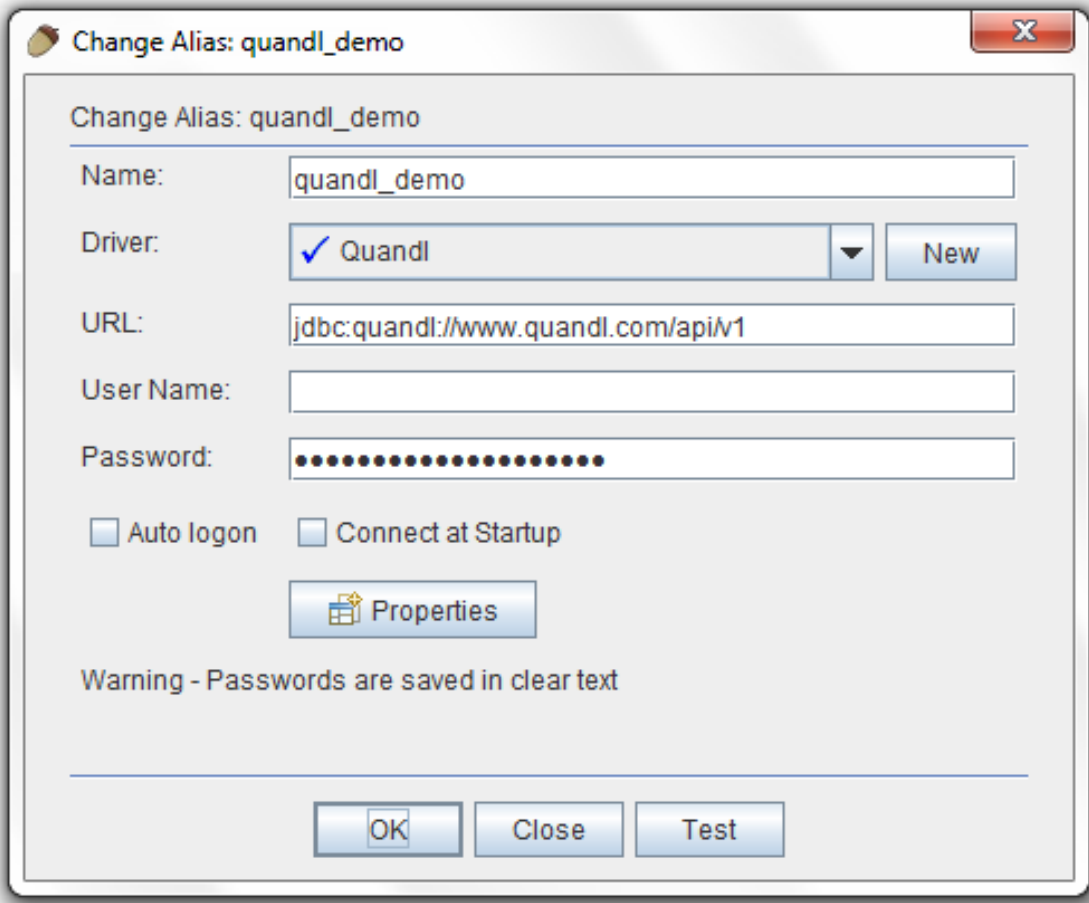


5. After installation, the **Quandl** driver should be checked indicating it is ready for use. If not, make sure **unityjdbc.jar** was installed correctly.



6. Click the **Aliases** tab. Then click the  to add a new alias. Here is sample alias information for Quandl.

Alias	quandl_demo
User Name	<blank>
Password	Quandl API Key
JDBC URL	jdbc:quandl://www.quandl.com/api/v1



Change Alias: quandl_demo

Change Alias: quandl_demo

Name:

Driver: Quandl


URL:

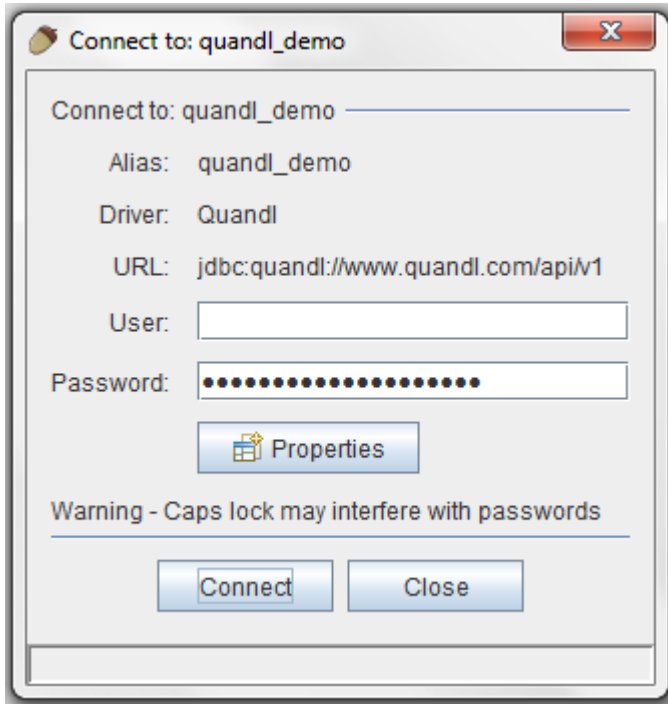
User Name:

Password:

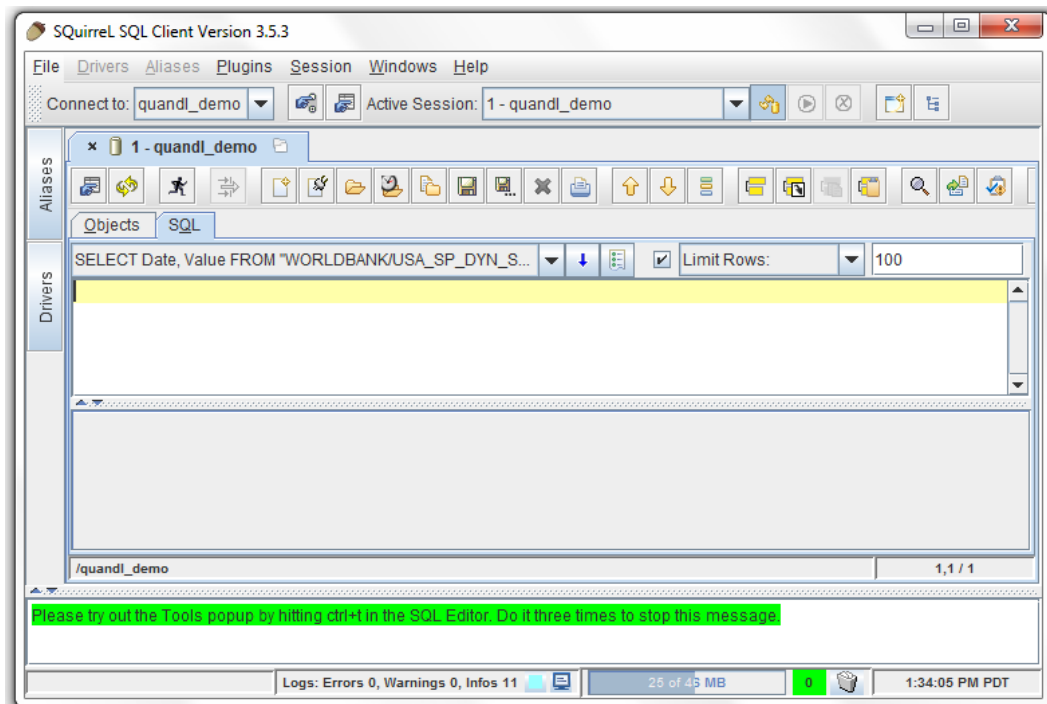
Auto logon Connect at Startup

Warning - Passwords are saved in clear text

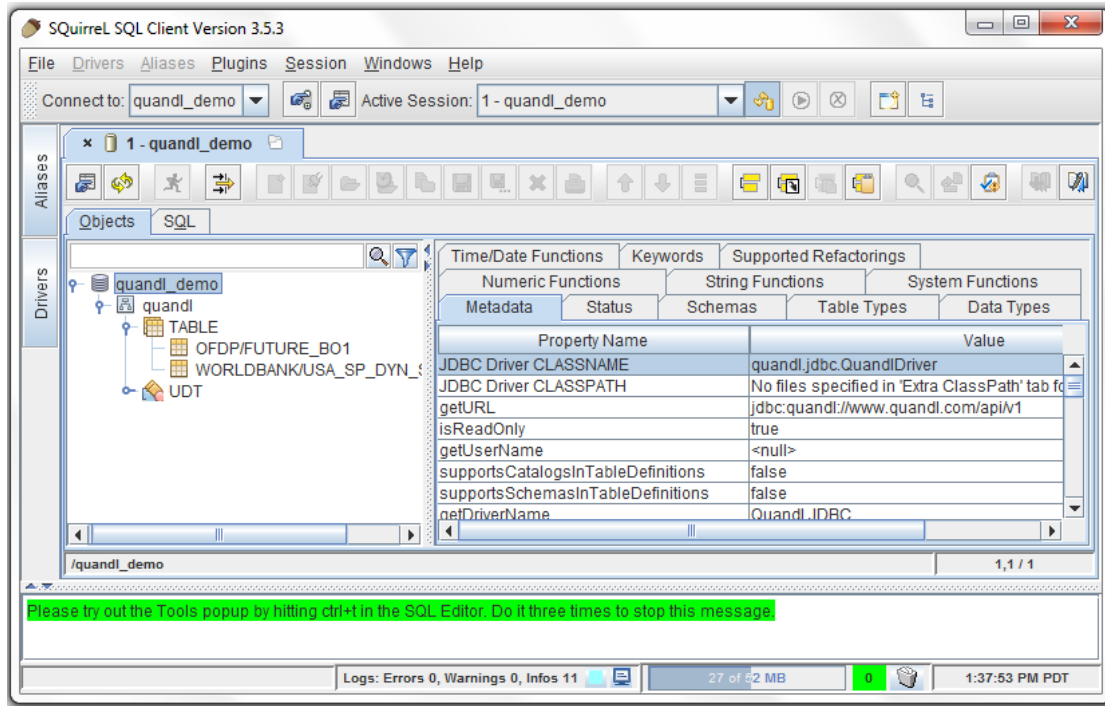
7. Click OK. You can now connect by clicking the  and then clicking **Connect** in the connection menu.



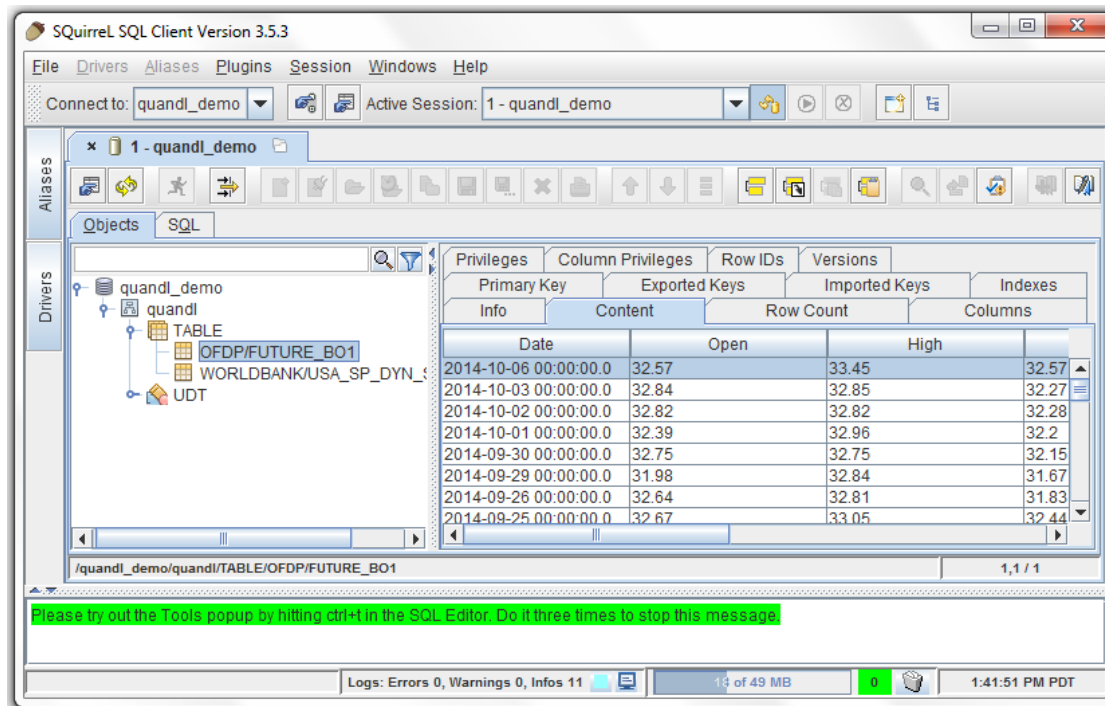
8. After connection you will see a window that allows you to enter SQL queries.



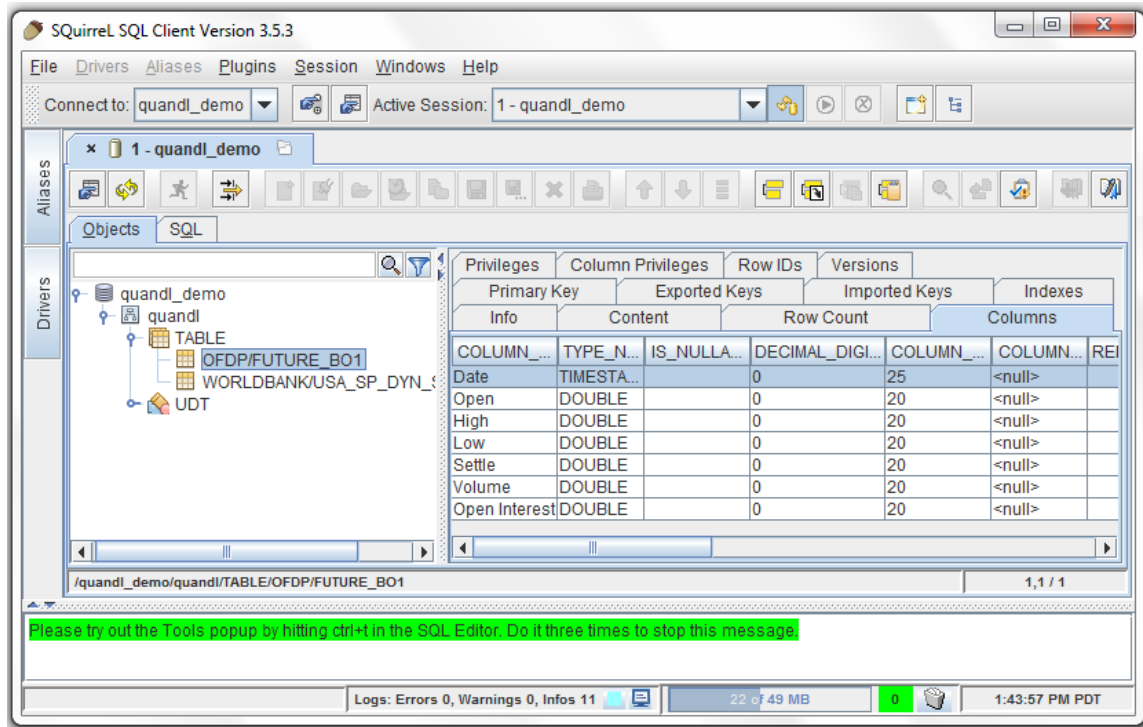
9. To browse the schema, click the **Objects** tab.

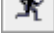


10. View table contents by clicking the table and selecting the **Contents** tab.



11. View table fields by clicking the table and selecting the **Columns** tab.



12. Click on the **SQL** tab to enter queries. Click  to run the query. Here are two example queries. The first query queries a single table and runs completely on Quandl. The second query uses a join that requires UnityJDBC. The trail version is limited to returning 100 rows. Upgrade to the full version at <http://www.unityjdbc.com/purchase.php>. More details on querying at http://www.unityjdbc.com/quandl/quandl_jdbc.php.

Query #1	SELECT Date, Value FROM "WORLDBANK/USA_SP_DYN_SMAM_FE"
Query #2	SELECT U.Date, U.Value, P.Value FROM "WORLDBANK/USA_SP_DYN_SMAM_FE" U, "WORLDBANK/POL_SP_DYN_IMRT_IN" P WHERE U.Value = P.Value

*See below for query screenshots

Note: To find a dataset to query, go to Quandl's data browser at <https://www.quandl.com/c/collections>, select a dataset, and use the dataset's "Quandl Code". Any queried table will automatically be added to the existing schema.

Squirrel SQL Client Version 3.5.3

File Drivers Aliases Plugins Session Windows Help

Connect to: quandl_demo Active Session: 1 - quandl_demo

Aliases Drivers

Objects SQL

SELECT Date, Value FROM "WORLDBANK/USA_SP_DYN_SMAM_FE" Limit Rows: 100

```
SELECT Date, Value
FROM "WORLDBANK/USA_SP_DYN_SMAM_FE"
```

Rows 5: SELECT Date, Value FROM "WORLDBANK/USA_SP_DYN_SMAM_FE" Rows: 1, Cols: 0

Results MetaData Info Overview / Charts

Date	Value
2009-12-31 00:00:00.0	26.9
2000-12-31 00:00:00.0	26
1990-12-31 00:00:00.0	25.4
1980-12-31 00:00:00.0	23.3
1970-12-31 00:00:00.0	21.5

/quandl_demo/quandl/TABLE/WORLDBANK/USA_SP_DYN_SMAM_FE 2,40 / 61

Please try out the Tools popup by hitting ctrl+t in the SQL Editor. Do it three times to stop this message.

Logs: Errors 0, Warnings 0, Infos 11 28 of 44 MB 0 1:54:46 PM PDT

Squirrel SQL Client Version 3.5.3

File Drivers Aliases Plugins Session Windows Help

Connect to: quandl_demo Active Session: 1 - quandl_demo

Aliases Drivers

Objects SQL

SELECT U.Date, U.Value, P.Value FROM "WORLDBANK/USA_SP_DYN_SMAM_FE" U, "WORLDBANK/POL_SP_DYN_IMRTI_IN" P WHERE U.Value = P.Value Limit Rows: 100

```
SELECT U.Date, U.Value, P.Value
FROM "WORLDBANK/USA_SP_DYN_SMAM_FE" U,
"WORLDBANK/POL_SP_DYN_IMRTI_IN" P
WHERE U.Value = P.Value
```

Rows 2: SELECT U.Date, U.Value, P.Value FROM "WORLDBANK/USA_SP_DYN_SMAM_FE" U Rows: 1, Cols: 0

Results MetaData Info Overview / Charts

Date	Value	Value
1980-12-31 00:00:00.0	23.3	23.3
2009-12-31 00:00:00.0	26.9	26.9

/quandl_demo/quandl/TABLE/OFPD/FUTURE_BO1 4,25 / 139

Query 1 of 1, Rows read: 2, Elapsed time (seconds) - Total: 0.26, SQL query: 0.258, Reading results: 0.002

Logs: Errors 0, Warnings 0, Infos 51 30 of 42 MB 0 1:59:32 PM PDT